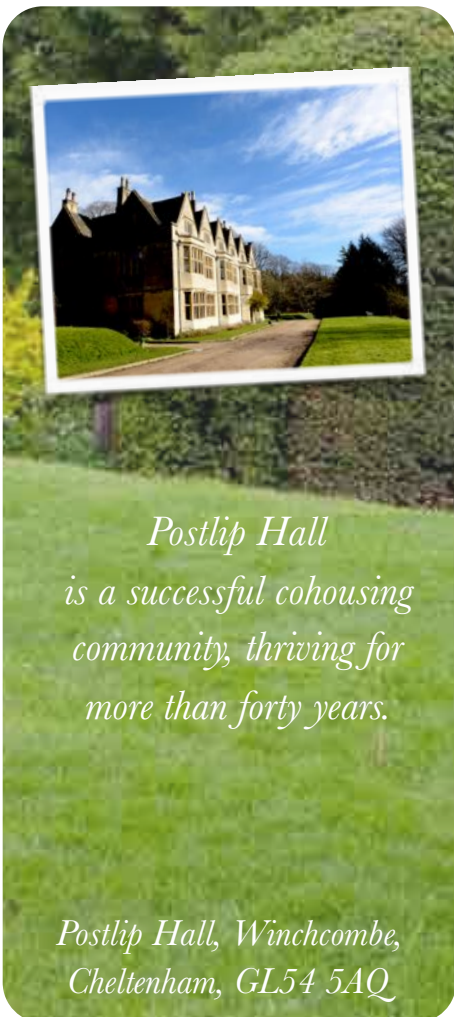


FOR SALE

4 bedroom home

POSTLIP HALL, WINCHCOMBE, CHELTENHAM, GL54 5AQ

COHOUSING COMMUNITY



*Postlip Hall
is a successful cohousing
community, thriving for
more than forty years.*

*Postlip Hall, Winchcombe,
Cheltenham, GL54 5AQ*

Postlip has a large 4-bedroom home for sale, situated on three levels, with views over the Postlip Valley.

Price: £427 000 *

Postlip Hall community has eight individual, private homes.

We share in the stewardship of a group of historic buildings, organic kitchen garden and 15 acres of woodland and parkland.

To find out more about how to apply, see our website:
www.postliphall.org.uk or email us at postlip.applicants@gmail.com

For more information about joining our community please visit our website or search for us on Facebook

* Price includes our legal and associated costs and is subject to an adjustment at the point of sale to allow for variation in the market



 **Postlip Hall**

www.postliphall.org.uk





Four bedroom home for sale

Price: £427 000 *

GROUND FLOOR

Entrance hall

The hall can be entered from both the Courtyard and the side lawn. It includes hanging space and a large fitted cupboard.

Large farmhouse-style kitchen (5.8m x 6.0m)

This large living & dining space with dual aspect, looks out onto half an acre of lawn and the Postlip Valley as well as the Courtyard. It has original exposed beams and stone mullion windows with secondary glazing. It is fitted with bespoke kitchen units with solid oak worktops, double Belfast sink, integrated electric ceramic hob and oven, dishwasher, and plumbing for a washing machine. An oil-fired Rayburn cooking range provides hot water and full central heating for the whole house. There is a large walk-in larder.

FIRST FLOOR

The landing area leads to a bathroom, the living room which leads to Bedroom 1, and stairs up to three bedrooms.

Bathroom

This modern bathroom includes a large antique roll-topped bath. It has a pedestal basin and low-level toilet, a separate shower, a heated towel rail, and secondary glazing.

Living Room (5.8m x 6.2m)

This room has a dual aspect giving views over the estate. There is secondary glazing, the lights can be dimmed, and there is a twin aerial point linked to the Hall's Freesat dish. Like the kitchen it has stone mullion windows together with original beams in a high ceiling (2.5m). There is feature stone fireplace. A built-in cupboard houses the hot water tank and water storage tank.

Bedroom 1 (area 25.5 m²) with Study (3.7m x 2.1m) and Gallery (area 26.8 m²)

This is an exceptional, two-storey room, with original A-frame construction, stone mullion windows, and a dressed stone fireplace. The whole room has been recently decorated and carpeted. The master bedroom has an en-suite toilet and shower. The study and large three-sided gallery are versatile spaces that can be used in many ways. The gallery has a useful storage cupboard.

SECOND FLOOR

The landing gives access to three bedrooms over the Living Room.

Bedroom 2 (4.5m x 3.1m), Bedroom 3 (4.5m x 2.5m), and Bedroom 4 (3.0m x 2.5m)

Bedroom 2 is a double sized room with a small stone fireplace.

Bedroom 3 is a double sized room with a dual aspect.

Bedroom 4 is a small double sized room with a platform single bed above.

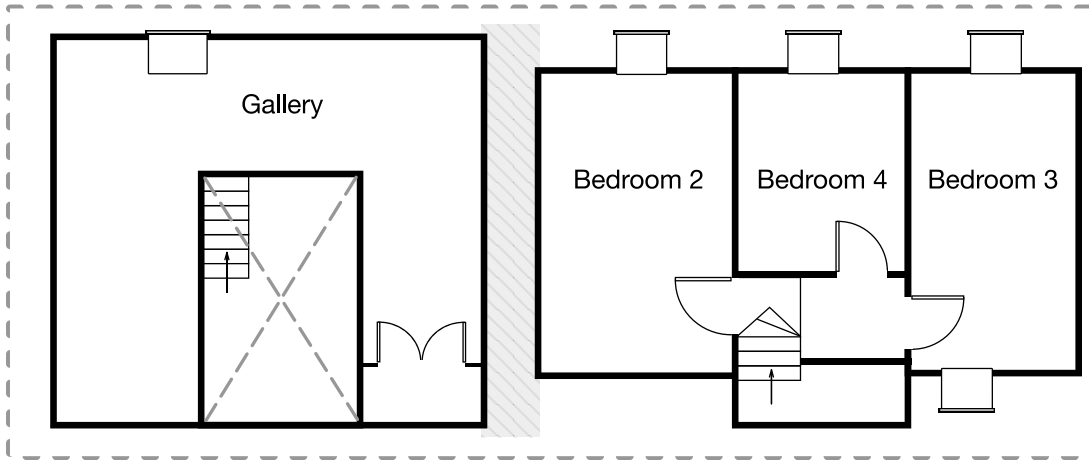
All three bedrooms have high ceilings, dormer windows make them feel light, and there are cupboards in the eaves.

Price: £427 000 *

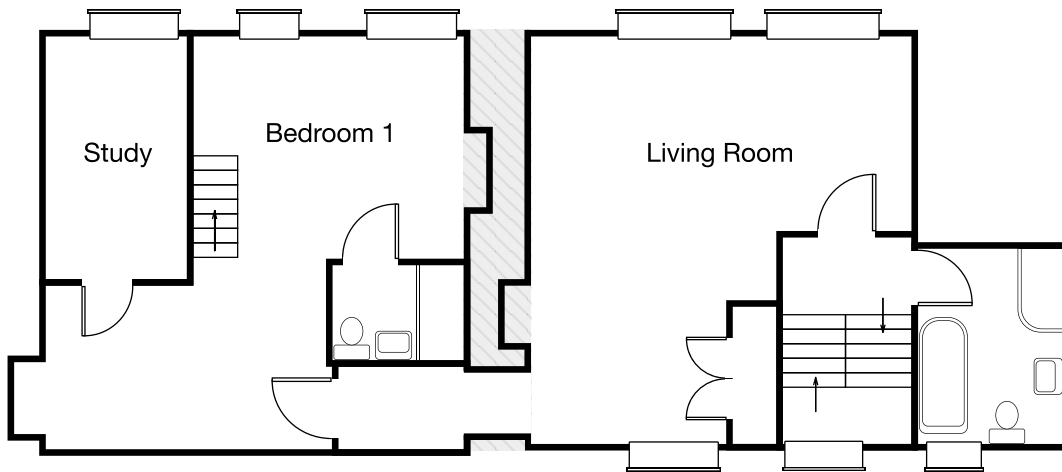
To find out more about how to apply, see our website: www.postliphall.org.uk or email us at postlip.applicants@gmail.com

Unit 3, Postlip Hall

Second Floor



First Floor



Ground Floor

